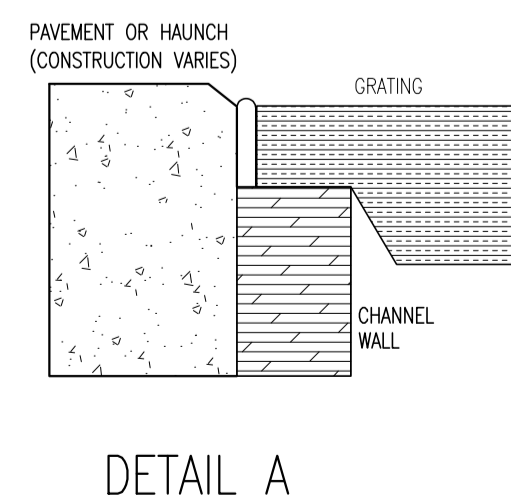
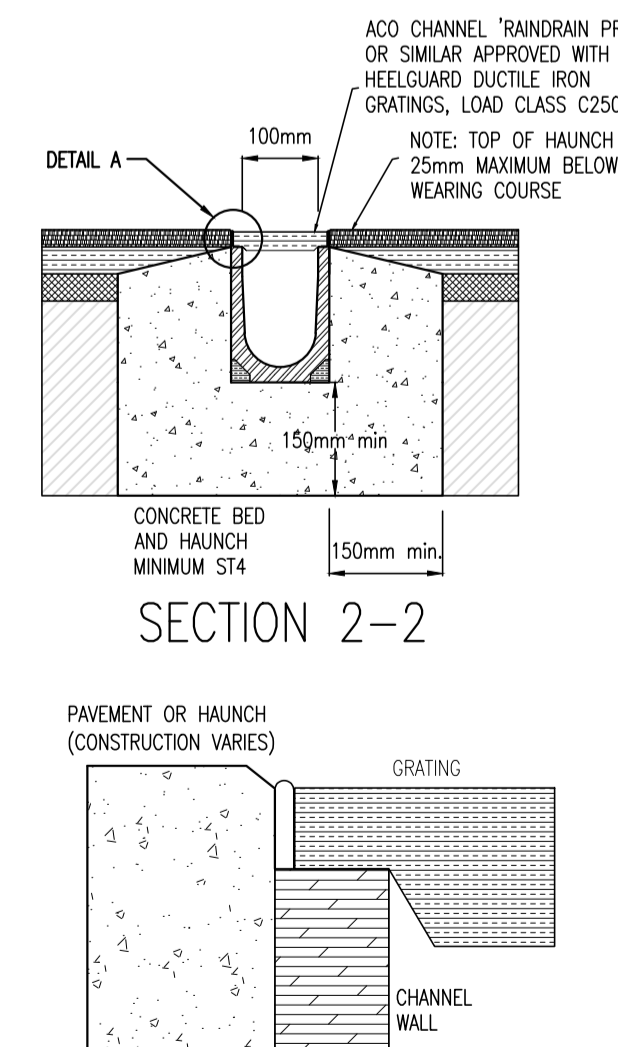
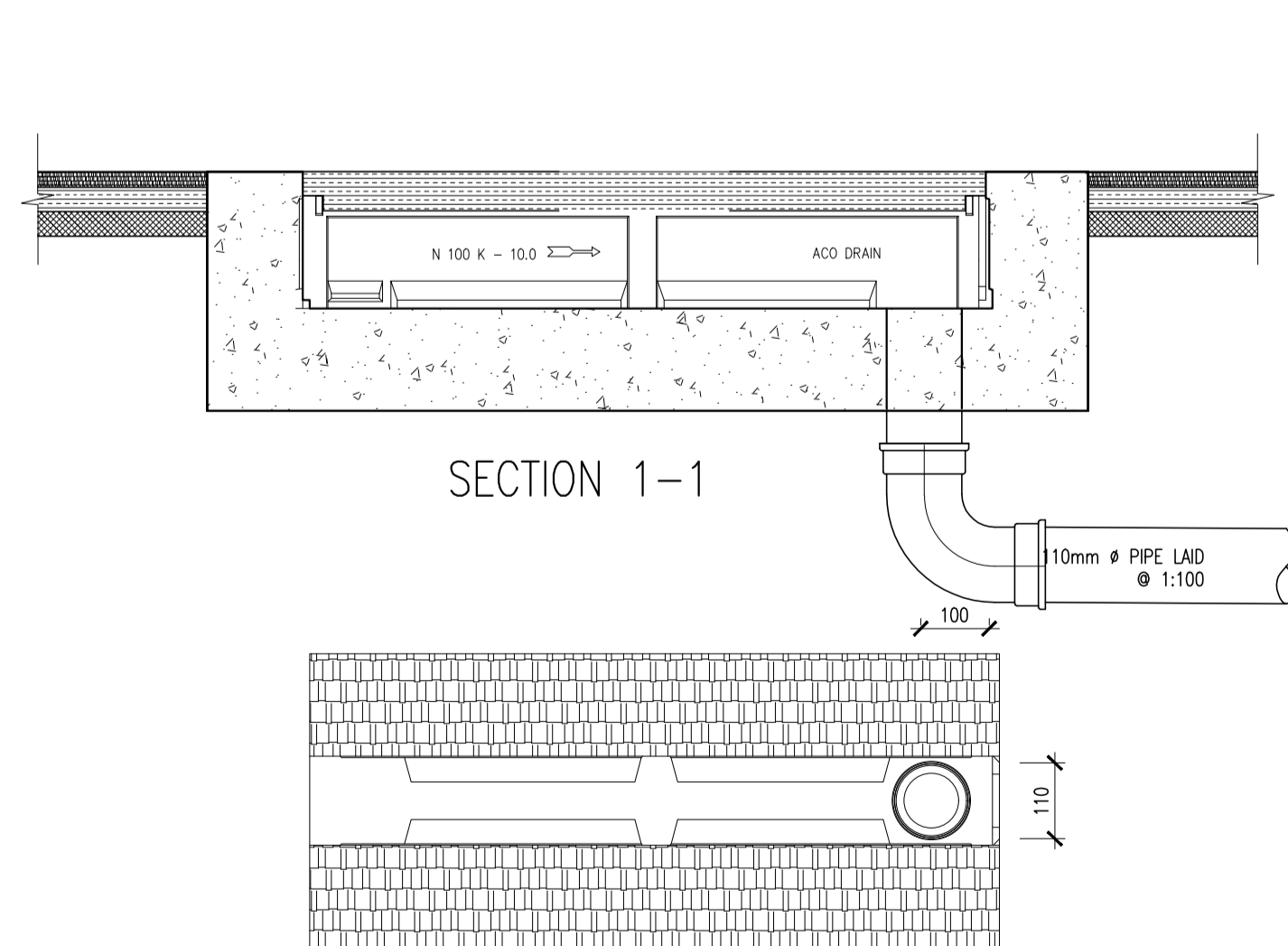
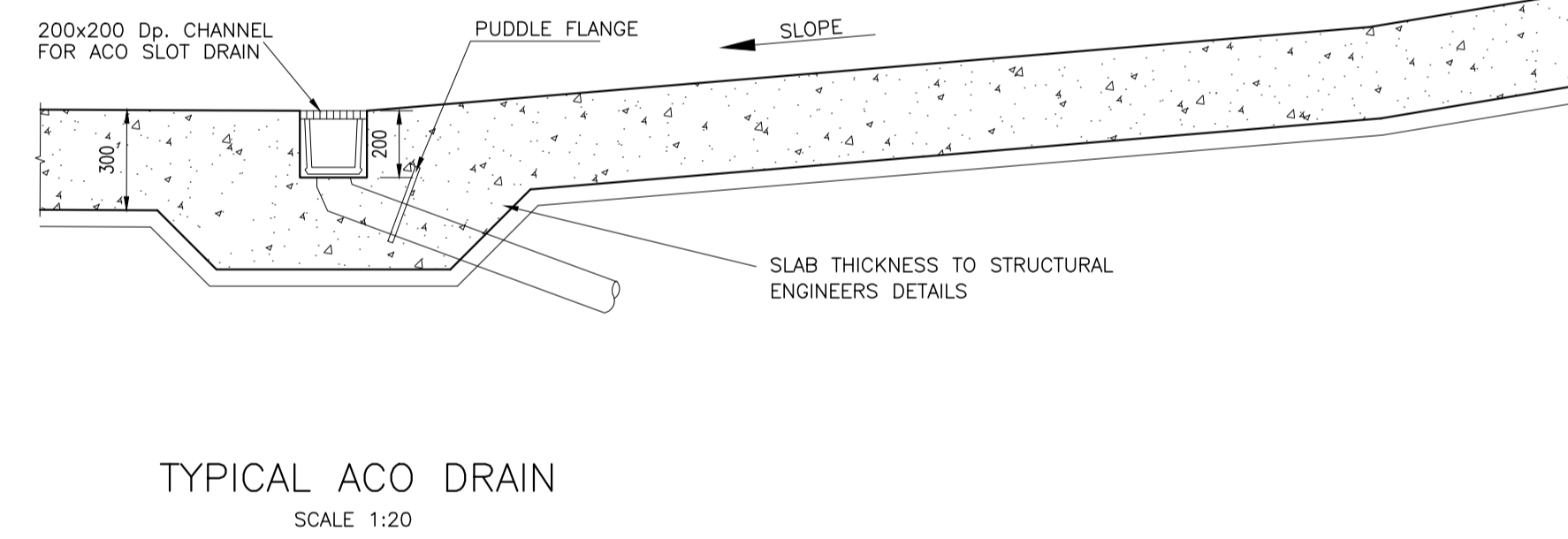
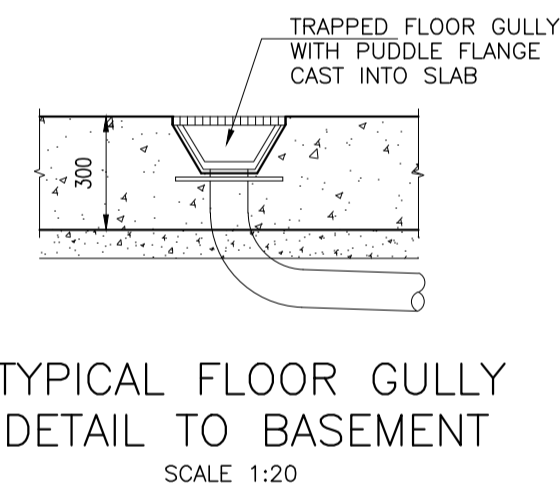
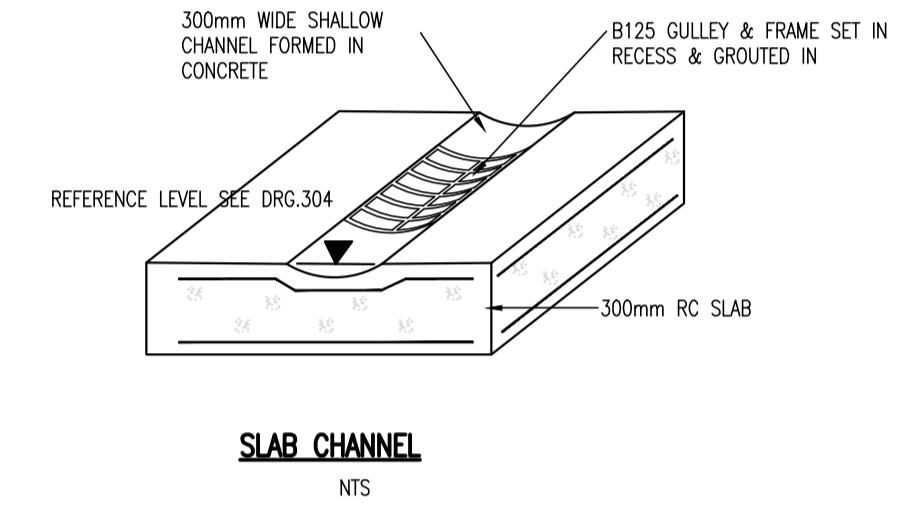
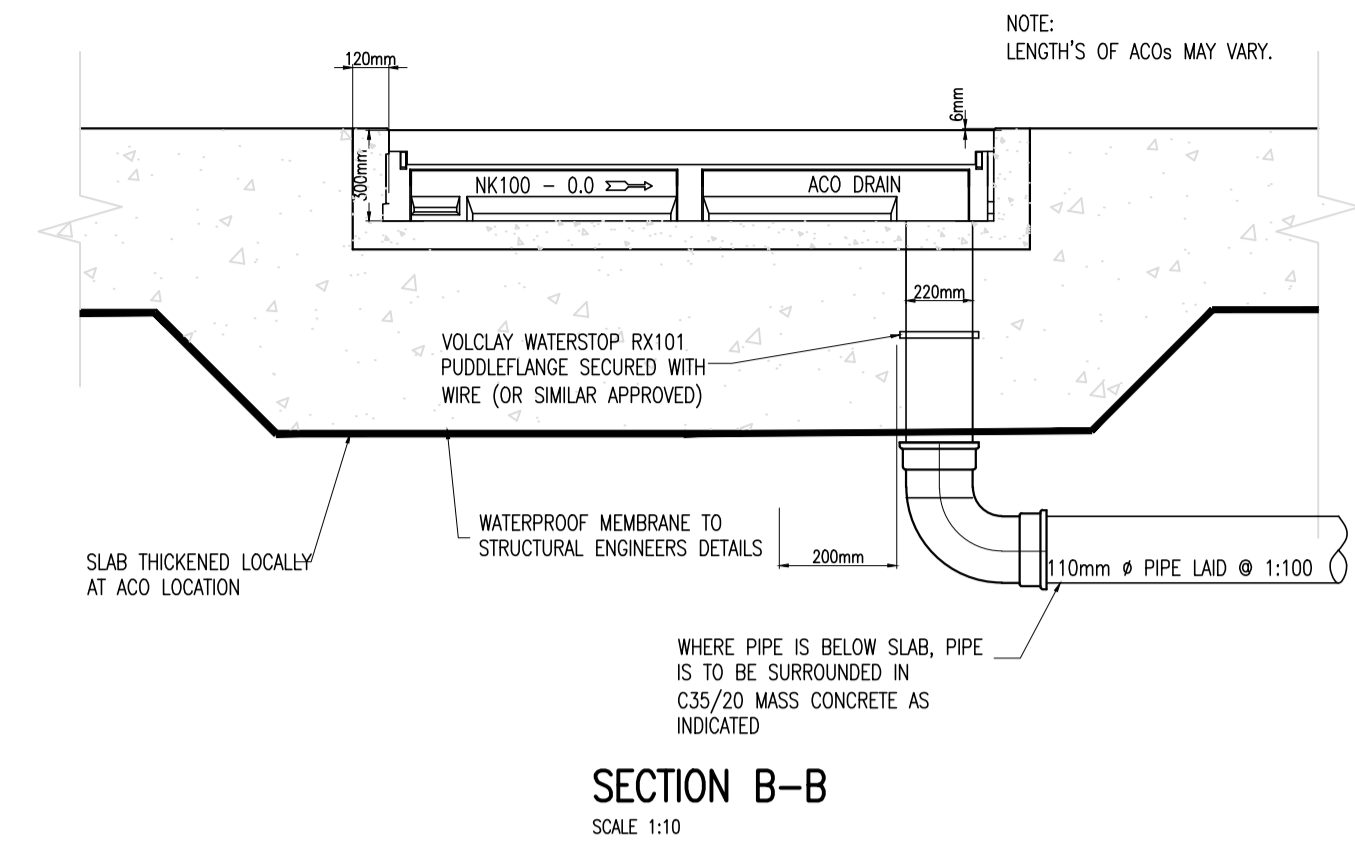
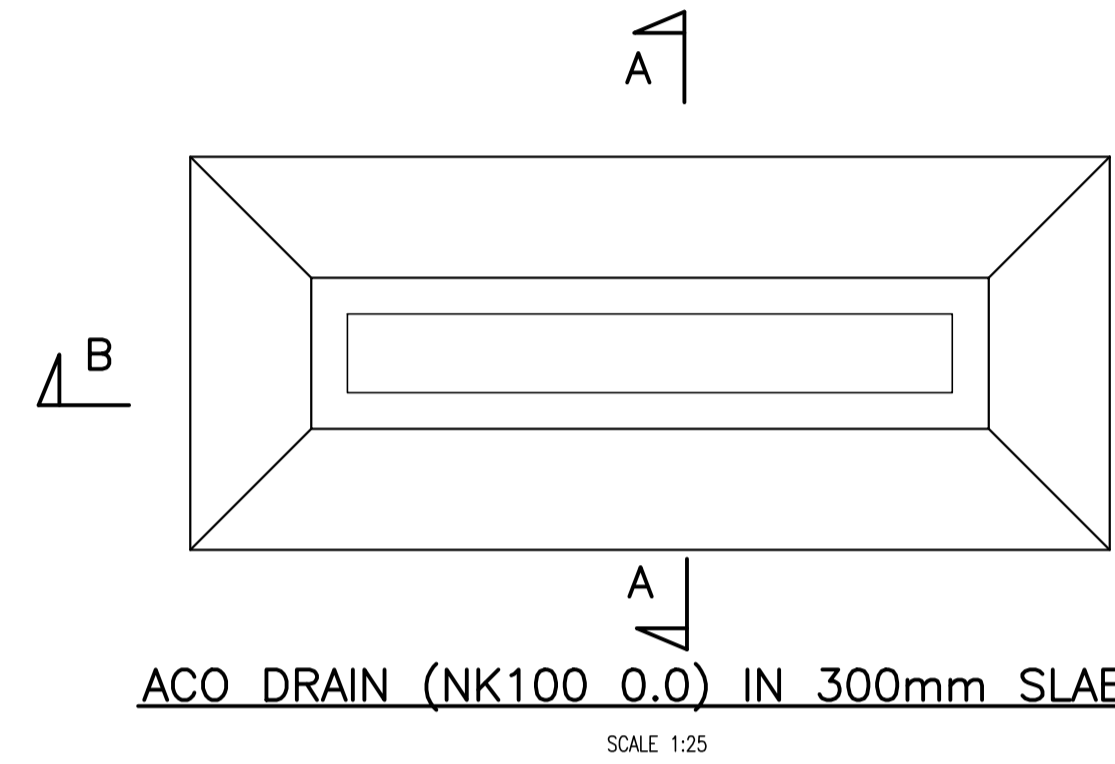
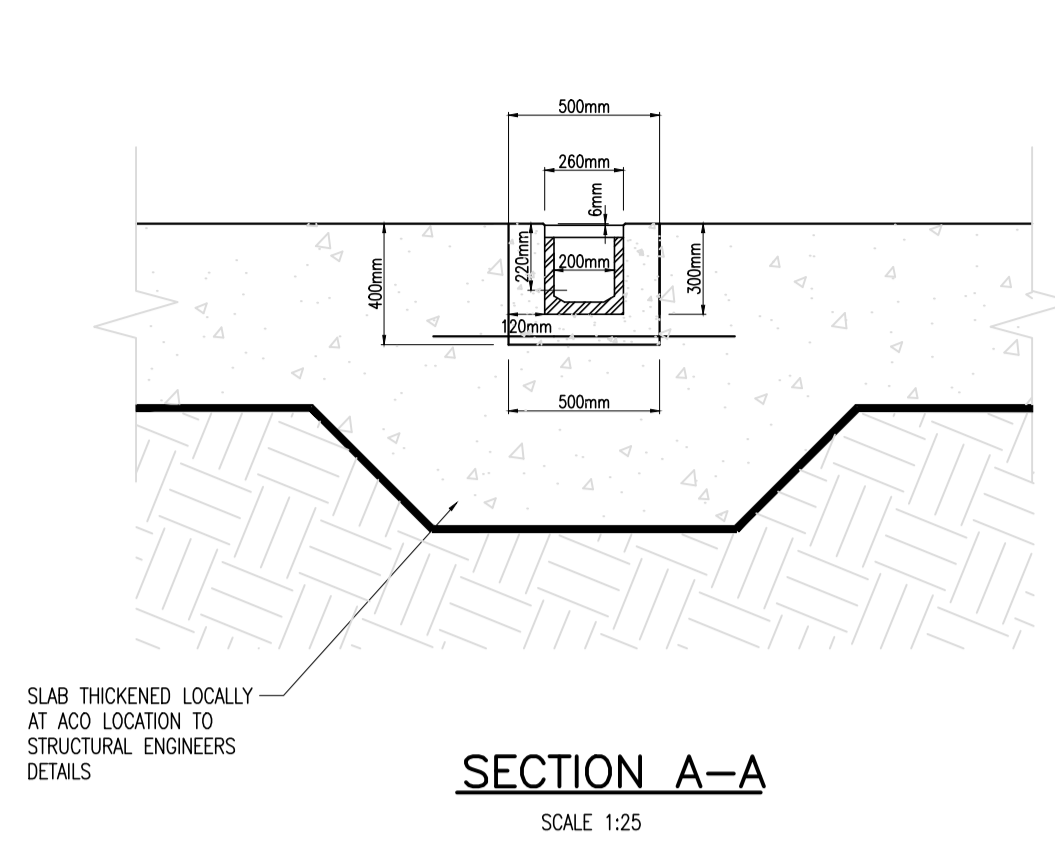
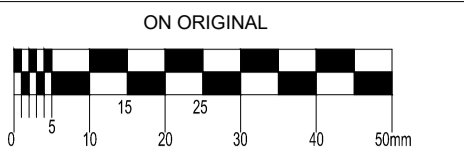


TYPICAL BEDDING DETAILS
SCALE 1:25



ACO CHANNELS IN ASPHALT
SCALE 1:10



NOTES:

- ALL WORKS TO COMPLY WITH THE CURRENT BUILDING REGULATIONS, WATER BYELAWS AND LOCAL AUTHORITY REQUIREMENTS.
- SLUNG SURFACE WATER PIPEWORK SHALL BE uPVC.
- SLUNG NETWORKS TO BE COORDINATED WITH M&E SERVICES AND ARCHITECTURAL SERVICES/DROPS.
- MIN. FALLS IN SLUNG DRAINAGE TO COMPLY WITH BUILDING RECS

P02	09-12-20	PLANNING	BS	NJF
P01	06-11-20	PLANNING	BS	NJF
rev	date	description	by	chkd.

client approval	A - Approved
	B - Approved with comments
	C - Do not use

suitability	issue purpose
S2 - INFORMATION	PLANNING

DBFL Consulting Engineers
Civil, Structural & Transportation Engineering
www.dbfl.ie

SULLY OFFICE: Ormond House, Upper Ormond Quay, Dublin 7, Ireland.
PHONE: +353 1 400 4000
CORK OFFICE: Phoenix House, Monahan Road, Carr.
PHONE: +353 (0) 21 2024638
WATERFORD OFFICE: Unit 2, The Chandlery, 1-2 O'Connell Street, Waterford, Ireland.
PHONE: +353 51 309 500

project ref.

RESIDENTIAL DEVELOPMENT AT
GLENAMUCK ROAD

drawing title

TYPICAL DRAINAGE DETAILS SHEET
3

client

AXIS CONSTRUCTION

designed by	author	scale	sheet size
PCC	BS	AS SHOWN	A1
drawing no.		revision	